


YOUR • YOU'RE

TASK CARDS

SHELLEY GRAY

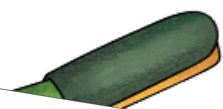
18



If _____ hungry, you
can have an apple.


13

Please sign
name on _____



21

What are you growing in
_____ garden?



4



When _____
finished painting, wash the
brush in the sink.

Are your students struggling with
correct forms of

your and you're?

These gallery walk or task cards
make the perfect supplement to
your writing or grammar
instruction!

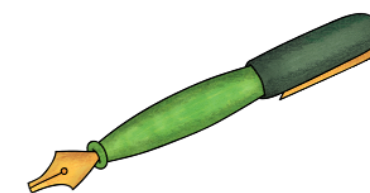
18



If _____ hungry, you
can have an apple.

13

Please sign _____
name on the line.



4



When _____
finished painting, wash the
brush in the sink.

21


What are you growing in
_____ garden?




Use as task cards at a station or center...

YOUR/YOURE RECORDING SHEET

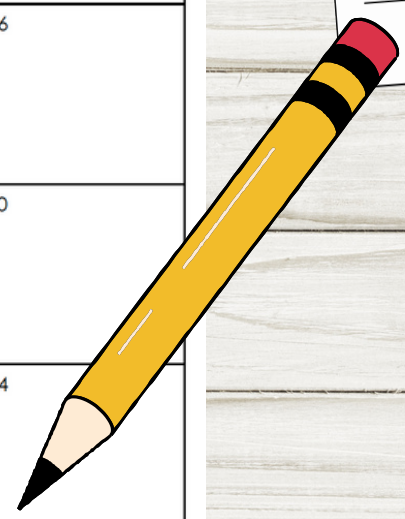
1	2	3	4
5	6	7	8
9	10	11	12
13	14	15	16
17	18	19	20
21	22	23	24

18
If _____ hungry, you
can have an apple.


13
Please sign _____
name on the line.



21
What are you growing in
_____ garden?



4
When _____
finished painting, wash the
brush in the sink.





...or post cards around the room and use as a gallery walk activity!



18
If _____ hungry, you
can have an apple.


13
Please sign _____
name on the line.


21
What are you growing in
_____ garden?


Get them as part of a bundle for even more practice and reinforcement!

YOUR • YOU'RE

ACTIVITIES

Bundle

SHELLEY GRAY

The bundle includes several activity cards and worksheets:

- YOU'RE, YOU ARE**: A card with a pink speech bubble containing the text "YOU'RE" and "YOU ARE". Below it, a yellow brushstroke contains the sentence "You're going to be tired tomorrow if you stay up too late." Another yellow brushstroke contains the sentence "Please tell me if you're coming to my birthday party."
- YOUR BELONGING**: A card with the word "YOUR" in large blue letters and "BELONGING" below it. A yellow brushstroke contains the sentence "Don't drop your marshmallow in the fire!" and another yellow brushstroke contains the sentence "Is it your birthday today?"
- YOUR/YOURE** Worksheets: Two worksheets with the title "YOUR/YOURE". The first worksheet says "Let's quickly review the different forms of you/you're. When do you use each one?" and lists "YOU:" and "YOU'RE:". The second worksheet says "Fill in the blanks with the correct form of you/you're." and contains 12 numbered sentences with blank lines for the correct form of "you" or "you're".
- Other Cards**: Several smaller cards with prompts like "What are you growing in your garden?", "Please sign _____ name on the line.", and "When _____ finished painting, wash the brush in the sink."